

## Guided Wave Testing Case Study 8 Internal Corrosion

The GUL Wavemaker® utilises wave modes that energise the entire volume of the pipe, therefore it is ideal for the detection of internal corrosion.

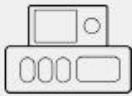
### Job Details

- 6" crude oil line
- Non-painted surface
- Dessert terrain with no pipe supports
- Partially buried in sand

### Main Findings

- Over 20m of pipe was inspected from a single location
- Several locations of internal corrosion were positively identified.
- B-Scan prove up confirms the defect severity

Equipment:



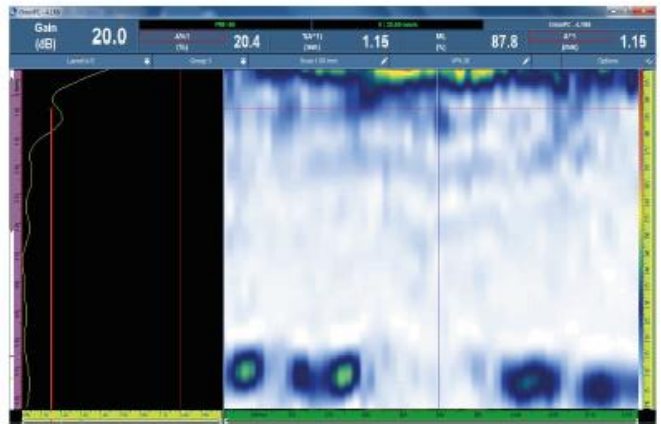
Wavemaker® G4



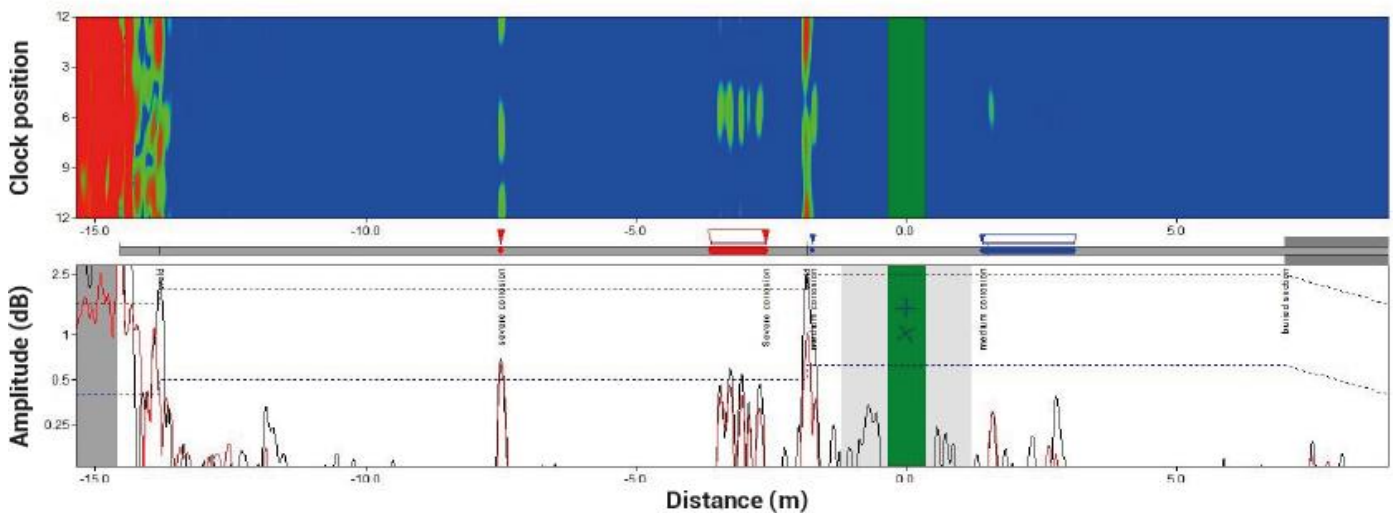
Inflatable Ring



An overview of 6" flow line.



B-Scan prove up at the severe defect location which confirms the internal corrosion.



4649 S Sam Houston Parkway E  
Houston, TX 77048  
Ph: (713) 722-7177  
Fax: (713) 722-7677

Houston, TX  
Beaumont, TX  
Corpus Christi, TX  
Deer Park, TX  
Texas City, TX

(713) 722-7177  
(409) 727-2400  
(361) 888-4700  
(281) 476-4444  
(405) 945-2662

Tulsa, OK  
Stanton, CA  
North Salt Lake, UT  
Denver, CO  
El Dorado, KS  
Canada

(918) 446-8773  
(714) 861-4058  
(385) 218-4777  
(303) 289-5253  
(316) 452-5440  
(780) 437-2022

Claremore, OK  
Hammond, IN  
New Orleans, LA  
Westlake, LA  
Mobile, AL  
United Kingdom

(918) 343-1420  
(219) 923-6501  
(504) 328-0070  
(337) 476-3132  
(251) 660-0024  
+44 1469 575728