

Guided Wave Testing Case Study 7 Defects in Elbows

Bends or elbows are common pipe fittings which are susceptible to corrosion and erosion. Using the C-Scan, defects at elbows can be detected and prioritised.

Job Details

- 16" Crude Oil line
- Tight 1D elbows

Main Findings

- Defect located in one of the two elbows within the test range.
- The defect is circumferentially aligned with the outer radius where the erosion type defects are commonly found.
- UT confirms the elbow defect has a 65% wall loss.

Equipment:



Wavemaker® G4mini



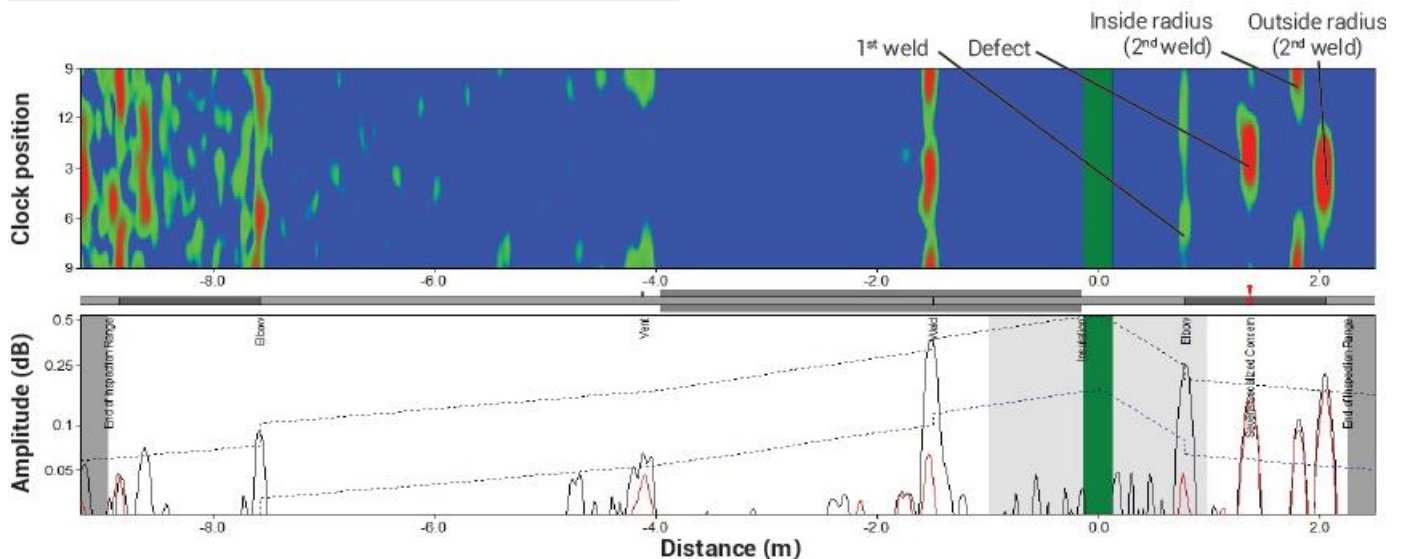
EFC Inflatable Ring



A view of the inner radius of the 1D elbow.



A view of the outer radius of the 1D elbow.



4649 S Sam Houston Parkway E
Houston, TX 77048
Ph: (713) 722-7177
Fax: (713) 722-7677

Houston, TX (713) 722-7177
Beaumont, TX (409) 727-2400
Corpus Christi, TX (361) 888-4700
Deer Park, TX (281) 476-4444
Texas City, TX (405) 945-2662

Tulsa, OK (918) 446-8773
Stanton, CA (714) 861-4058
North Salt Lake, UT (385) 218-4777
Denver, CO (303) 289-5253
El Dorado, KS (316) 452-5440
Canada (780) 437-2022

Claremore, OK (918) 343-1420
Hammond, IN (219) 923-6501
New Orleans, LA (504) 328-0070
Westlake, LA (337) 476-3132
Mobile, AL (251) 660-0024
United Kingdom +44 1469 575728