

Guided Wave Testing Case Study 6 High Temperature Pipelines

Pipes in service operated at temperatures as high as 360°C can be inspected using the High Temperature (HT) Wavemaker® Pipe Screening System (WPSS).

Job Details

- 8" Heavy Diesel line
- Calcium silicate insulation
- Pipe operation temperature at 240°C (or 464°F)
- High noise environment

Main Findings

- HT ring can be operated at high temperatures repeatedly
- An area of corrosion was identified and followed up with conventional NDT techniques.

Equipment:



Wavemaker® G4mini



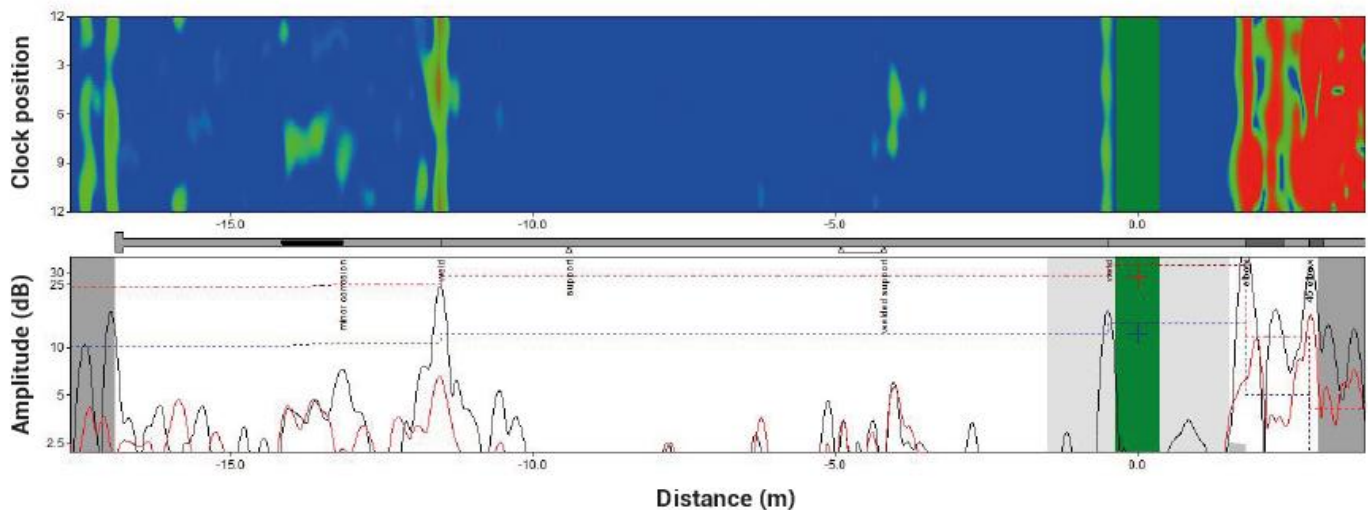
HT Inflatable Ring



An 8" diesel line operating at 240°C (or 464°F) being tested by a HT inflatable ring.



A temperature reading of 242°C (468°F) on the surface of the 8" diesel line.



4649 S Sam Houston Parkway E
Houston, TX 77048
Ph: (713) 722-7177
Fax: (713) 722-7677

Houston, TX (713) 722-7177
Beaumont, TX (409) 727-2400
Corpus Christi, TX (361) 888-4700
Deer Park, TX (281) 476-4444
Texas City, TX (405) 945-2662

Tulsa, OK (918) 446-8773
Stanton, CA (714) 861-4058
North Salt Lake, UT (385) 218-4777
Denver, CO (303) 289-5253
El Dorado, KS (316) 452-5440
Canada (780) 437-2022

Claremore, OK (918) 343-1420
Hammond, IN (219) 923-6501
New Orleans, LA (504) 328-0070
Westlake, LA (337) 476-3132
Mobile, AL (251) 660-0024
United Kingdom +44 1469 575728