

## Guided Wave Testing Case Study 5 Inspection of Pipelines for Corrosion Under Insulation

Corrosion under insulation (CUI), such as mineral wool or PE foam materials is a major problem in the petrochemical industry. Guided wave testing can inspect long lengths of pipes without requiring the removal of insulation over the entire length.

### Job Details

- 8" Jet fuel line
- Painted pipe surface
- Mineral wool insulation
- Pipe resting on simple supports

### Main Findings

- An area of corrosion was positively identified under insulation
- Removal of insulation confirmed the presence of heavy corrosion allowing direct examination

Equipment:



Wavemaker® G3



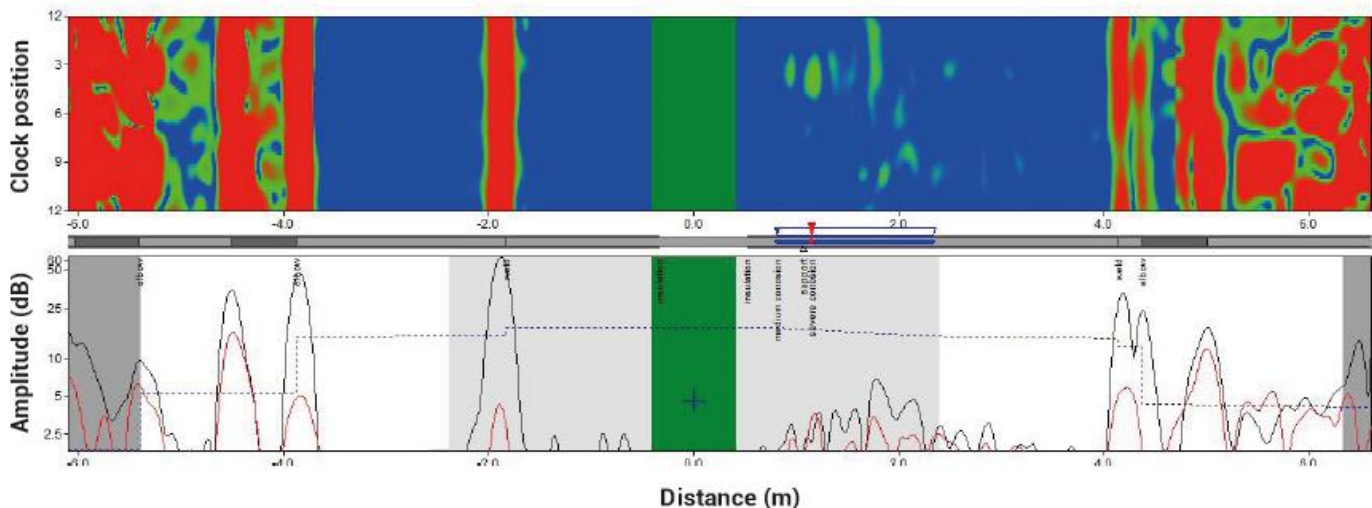
Inflation Ring



An overview of the 8" insulated pipe resting on the pipe rack.



An area of severe corrosion on the 8" insulated pipe.



4649 S Sam Houston Parkway E  
Houston, TX 77048  
Ph: (713) 722-7177  
Fax: (713) 722-7677

Houston, TX (713) 722-7177  
Beaumont, TX (409) 727-2400  
Corpus Christi, TX (361) 888-4700  
Deer Park, TX (281) 476-4444  
Texas City, TX (405) 945-2662

Tulsa, OK (918) 446-8773  
Stanton, CA (714) 861-4058  
North Salt Lake, UT (385) 218-4777  
Denver, CO (303) 289-5253  
El Dorado, KS (316) 452-5440  
Canada (780) 437-2022

Claremore, OK (918) 343-1420  
Hammond, IN (219) 923-6501  
New Orleans, LA (504) 328-0070  
Westlake, LA (337) 476-3132  
Mobile, AL (251) 660-0024  
United Kingdom +44 1469 575728