

Guided Wave Testing Case Study 2 Unrolled Pipe Display

This case study demonstrates the capabilities of the C-Scan, which is a synthetic focusing tool to determine the axial position and circumferential orientation of defects and pipe features.

Job Details

- 10" Natural gas line
- Painted pipe surface
- Pipe resting on simple supports

Main Findings

- Isolated pitting was found at two locations within the test range
- The C-scan plot provides precise circumferential orientation of the defects for further prove up

Equipment:



Wavemaker® G3



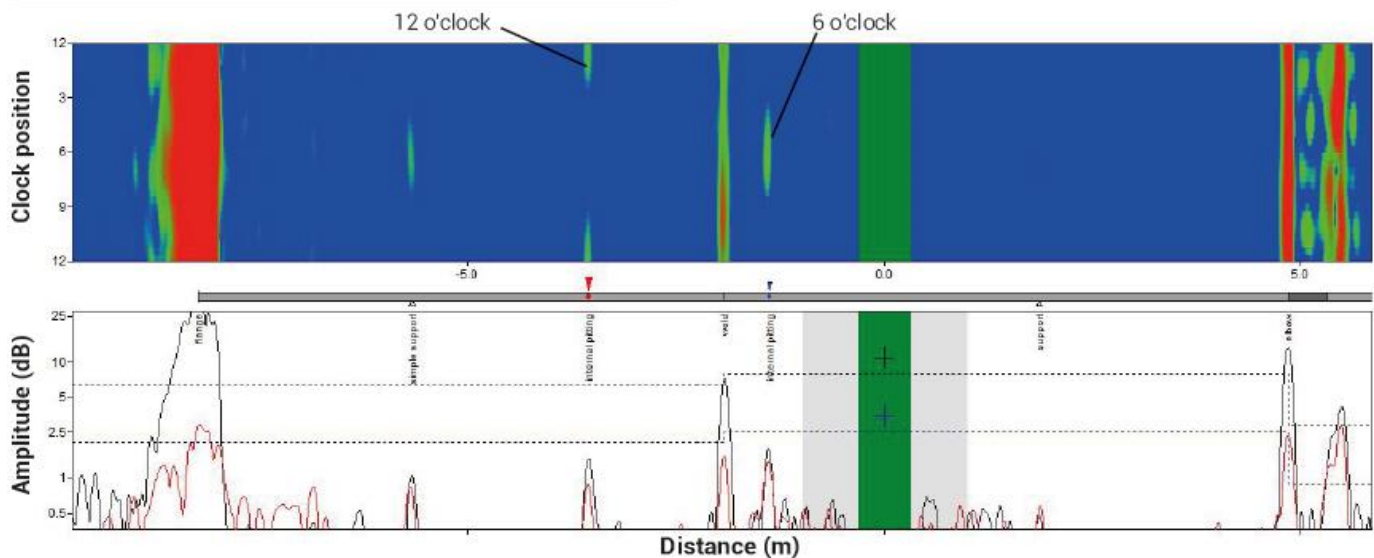
EFC Inflatable Ring



The view of the test pipe in the backward direction.



The view of the test pipe in the forward direction.



4649 S Sam Houston Parkway E
Houston, TX 77048
Ph: (713) 722-7177
Fax: (713) 722-7677

Houston, TX (713) 722-7177
Beaumont, TX (409) 727-2400
Corpus Christi, TX (361) 888-4700
Deer Park, TX (281) 476-4444
Texas City, TX (405) 945-2662

Tulsa, OK (918) 446-8773
Stanton, CA (714) 861-4058
North Salt Lake, UT (385) 218-4777
Denver, CO (303) 289-5253
El Dorado, KS (316) 452-5440
Canada (780) 437-2022

Claremore, OK (918) 343-1420
Hammond, IN (219) 923-6501
New Orleans, LA (504) 328-0070
Westlake, LA (337) 476-3132
Mobile, AL (251) 660-0024
United Kingdom +44 1469 575728