

## Guided Wave Testing Case Study 1 Long Range Screening for Internal and External Corrosion

This case study demonstrates the capability of the Wavemaker® System to screen long lengths of pipework from a single location.

### Job Details

- Main gas gathering line
- 20" schedule 40
- Uncoated pipe surface
- Desert Terrain

### Main Findings

- Up to 230m coverage from a single test point
- Some weld misalignments were highlighted
- No corrosion was found within the test range

Equipment:



Wavemaker® G3



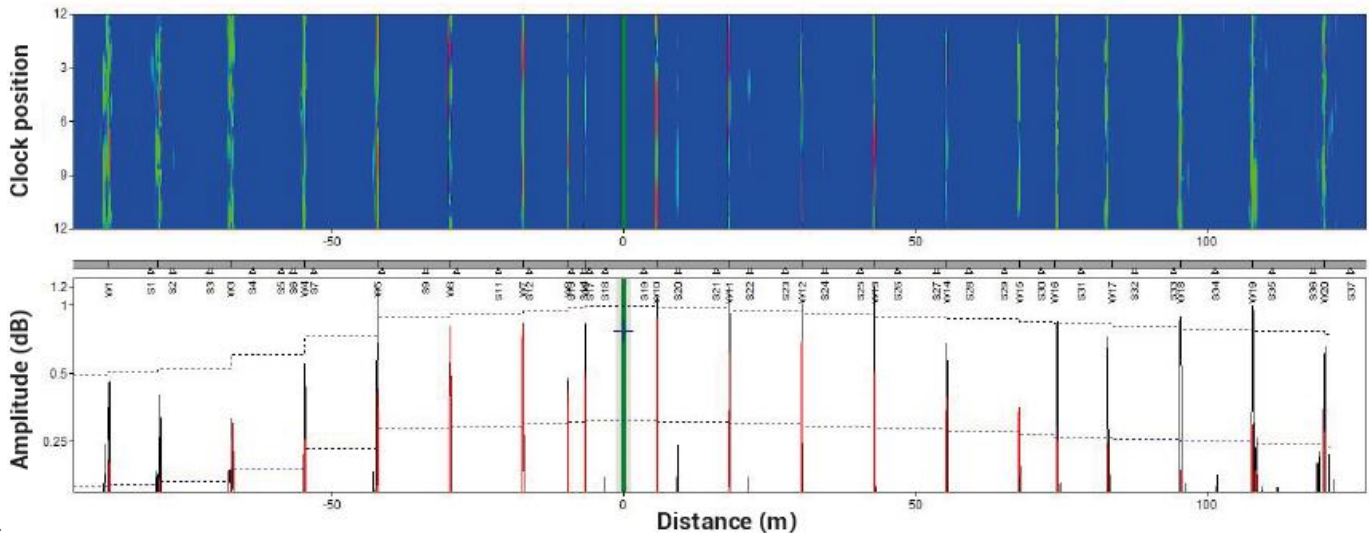
EFC Inflatable Ring



An overview of the 20" main gas gathering line.



Guided wave testing can screen under sliding and clamped supports.



4649 S Sam Houston Parkway E  
Houston, TX 77048  
Ph: (713) 722-7177  
Fax: (713) 722-7677

Houston, TX  
Beaumont, TX  
Corpus Christi, TX  
Deer Park, TX  
Texas City, TX

(713) 722-7177  
(409) 727-2400  
(361) 888-4700  
(281) 476-4444  
(405) 945-2662

Tulsa, OK  
Stanton, CA  
North Salt Lake, UT  
Denver, CO  
El Dorado, KS  
Canada

(918) 446-8773  
(714) 861-4058  
(385) 218-4777  
(303) 289-5253  
(316) 452-5440  
(780) 437-2022

Claremore, OK  
Hammond, IN  
New Orleans, LA  
Westlake, LA  
Mobile, AL  
United Kingdom

(918) 343-1420  
(219) 923-6501  
(504) 328-0070  
(337) 476-3132  
(251) 660-0024  
+44 1469 575728